

START HERE.

1. Select your Bra Style.
2. Select your Cup and/or Cradle based on your HH measurement
3. Select your Band based on your Cup and/or Cradle size then underbust measurement.

Check out our blog for more info on bra fit and alterations.

www.lilypadesigns.com/blog

SIZE

HORIZONTAL HEMISPHERE

10.1/4.0"	229mm	9.0 in
10.9/4.4"	245mm	9.6 in
11.7/4.6"	259mm	10.1 in
12.5/4.9"	273mm	10.7 in
13.3/5.2"	287mm	11.3 in
14.1/5.6"	301mm	11.8 in
14.9/5.9"	314mm	12.3 in
15.7/6.2"	329mm	13.0 in
16.5/6.5"	343mm	13.5 in
17.3/6.8"	357mm	14.0 in
18.1/7.1"	372mm	14.6 in

**Sizes are Bottom Cup Depth measurements in centimeters/
inches.

For BEGINNERS, we recommend using the HH size WITHOUT any optional steps and pin/clip the cups to fit at the muslin stage instead of grading. Grading instructions are on the blog and FB Group.

- Additional Fitting Resources available:
- <https://www.lilypadesigns.com/beginners-guide>
- <https://www.lilypadesigns.com/sizing-suggestion>
- <https://www.lilypadesigns.com/blog/koma-pattern-bcd-alteration>

For best results, please use Adobe Reader to turn on/off Size Layers.

Print Scale

3 inch

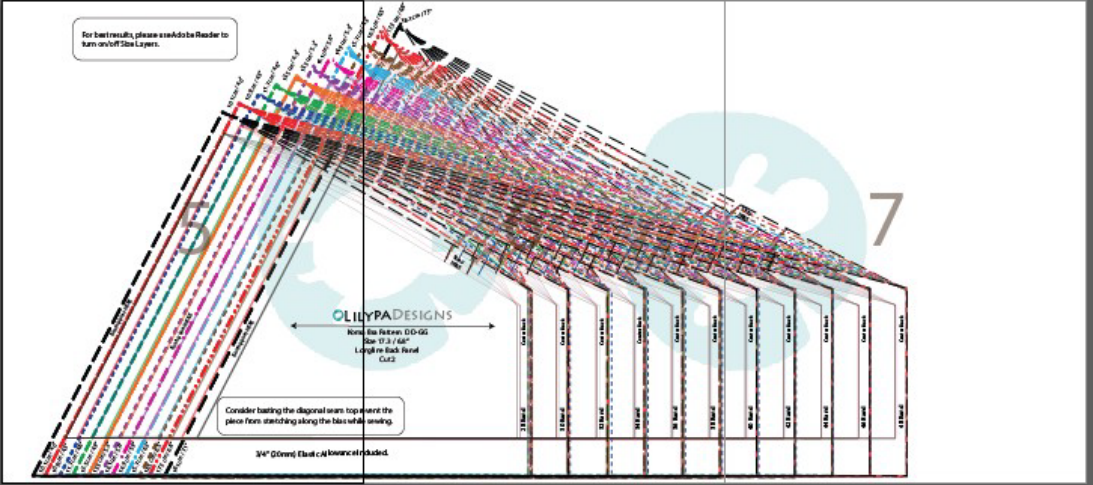
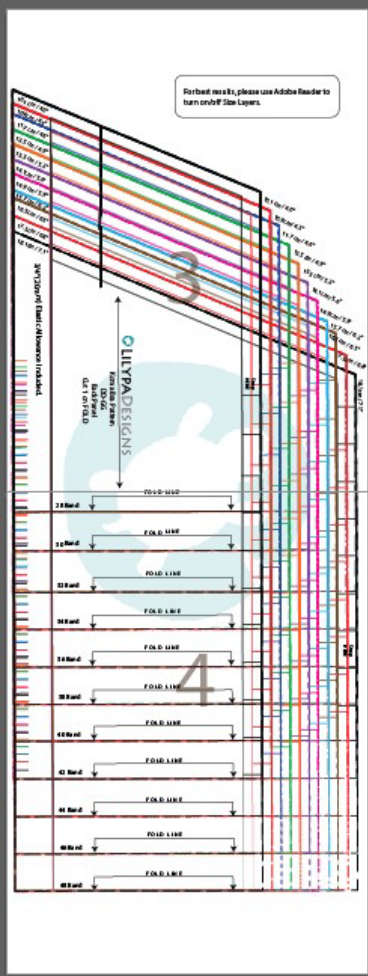
5 inch

7 inch

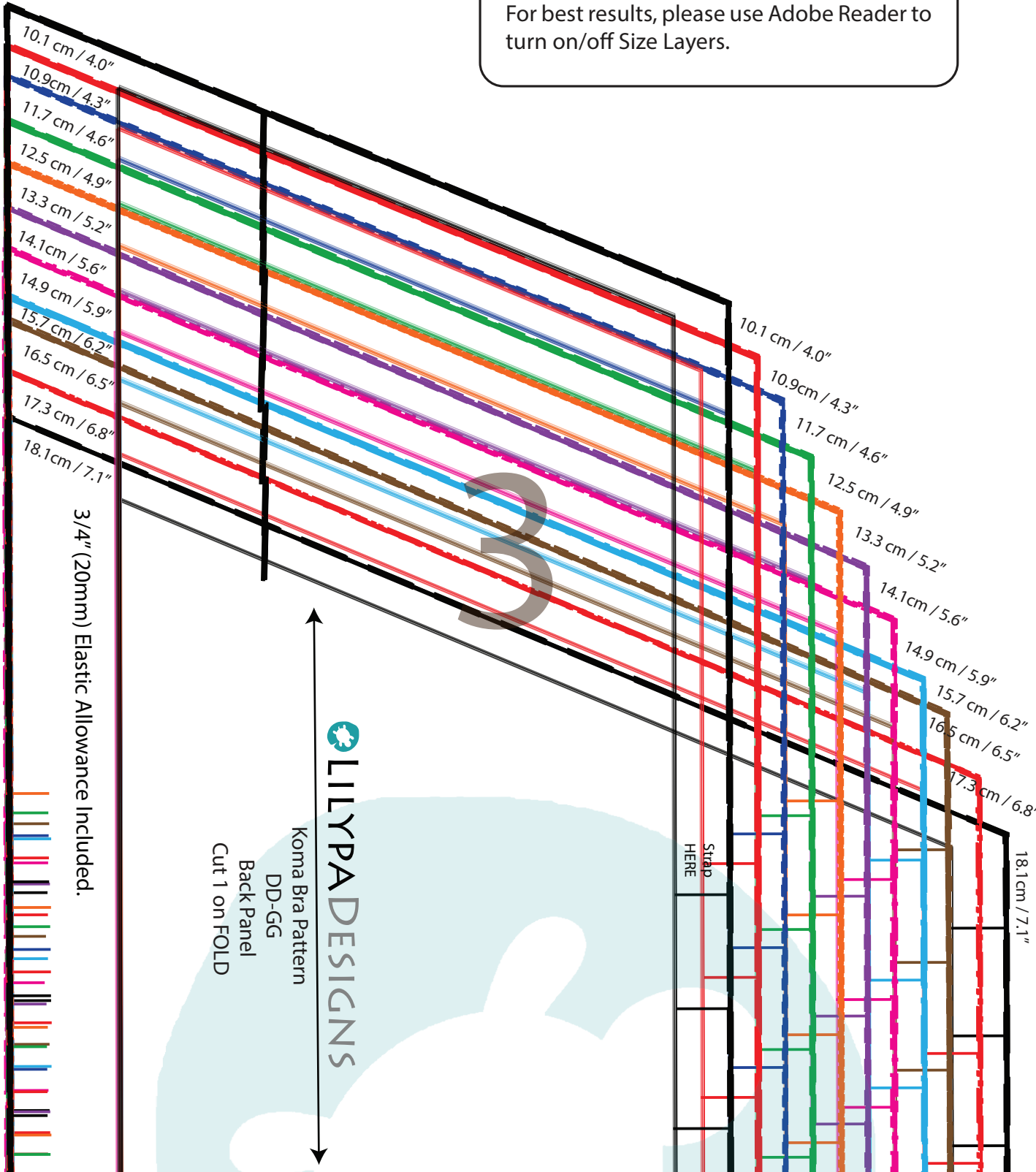
100 mm

175 mm

PATTERN ARRANGEMENT GUIDE



For best results, please use Adobe Reader to turn on/off Size Layers.



28 Band

FOLD LINE

30 Band

FOLD LINE

32 Band

FOLD LINE

34 Band

FOLD LINE

36 Band

FOLD LINE

38 Band

FOLD LINE

40 Band

FOLD LINE

42 Band

FOLD LINE

44 Band

FOLD LINE

46 Band

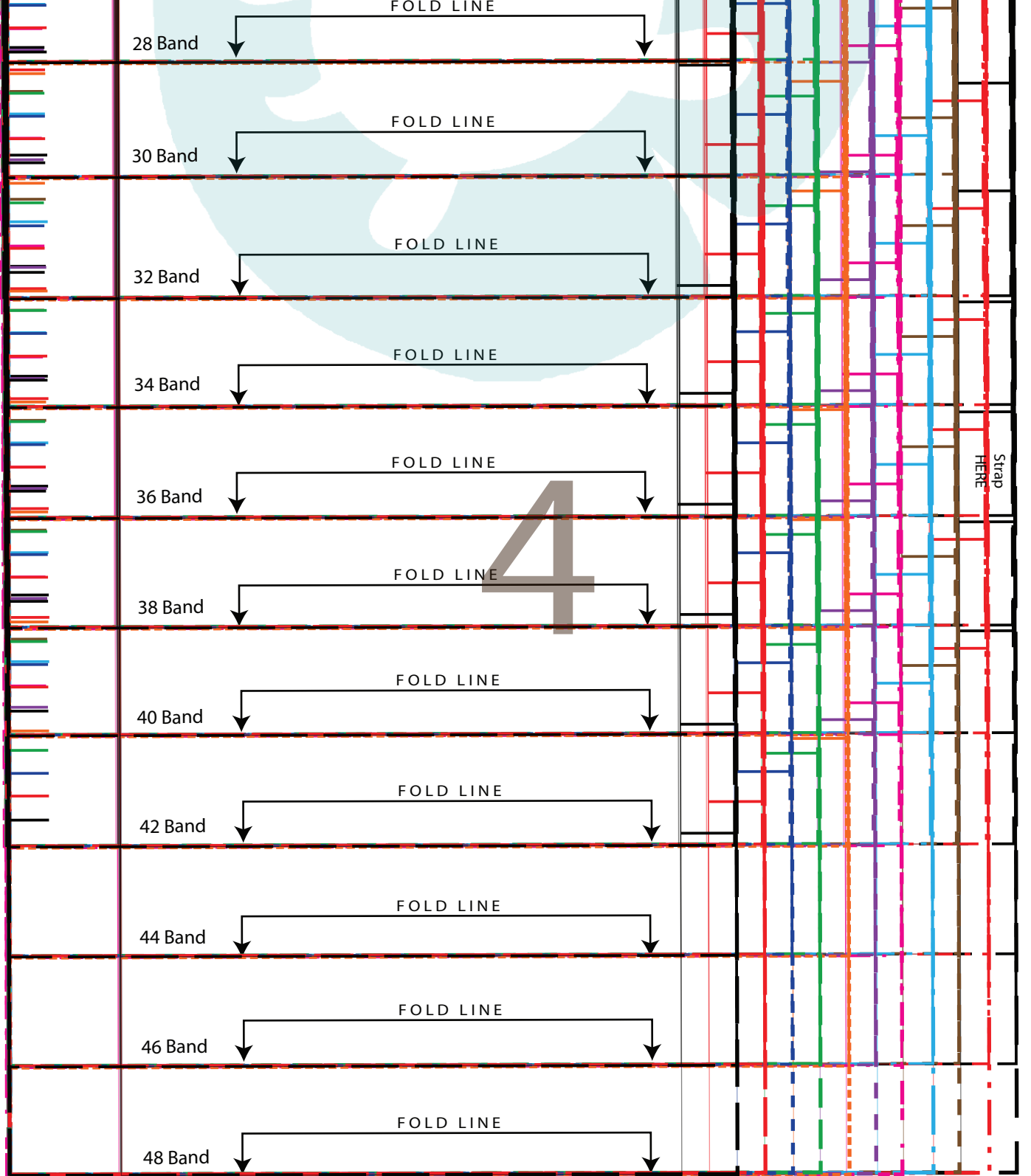
FOLD LINE

48 Band

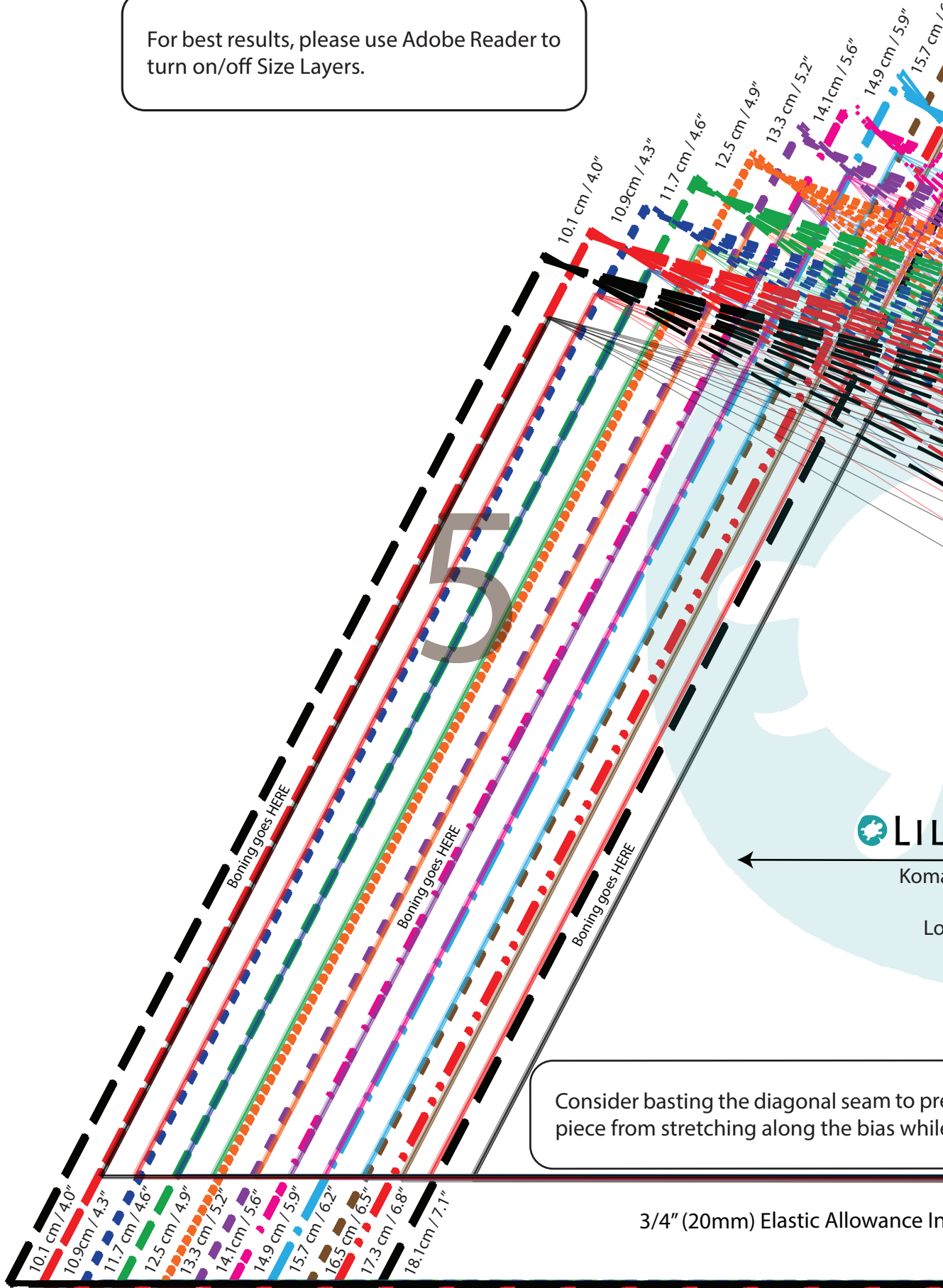
FOLD LINE

4

Strap
HERE

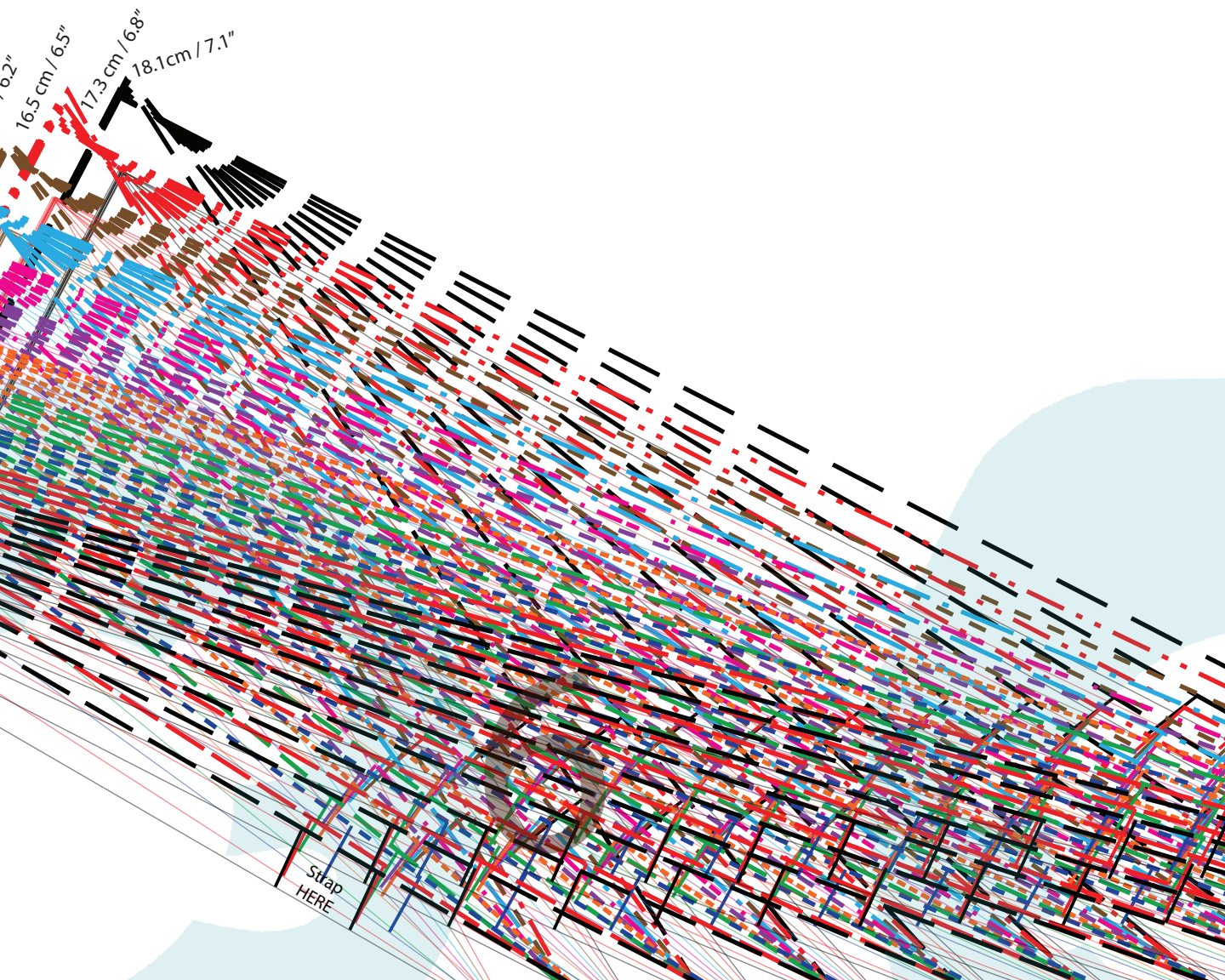


For best results, please use Adobe Reader to turn on/off Size Layers.



Consider basting the diagonal seam to prevent the piece from stretching along the bias while

3/4" (20mm) Elastic Allowance In



LYPADESIGNS

la Bra Pattern DD-GG
Size 17.3 / 6.8"
ongline Back Panel
Cut 2

event the
e sewing.

cluded.

Center Back

Center Back

Center Back

Center Back

Center Back

Center Back

28 Band

30 Band

32 Band

34 Band

36 Band

38 Band

