

START HERE.

1. Select your Bra Style.
2. Select your Cup and/or Cradle based on your HH measurement
3. Select your Band based on your Cup and/or Cradle size then underbust measurement.

Check out our blog for more info on bra fit and alterations.

www.lilypadesigns.com/blog

SIZE

HORIZONTAL HEMISPHERE

7.3 / 2.9"	182mm	7.2 in
7.9 / 3.1"	194mm	7.6 in
8.5 / 3.3"	206mm	8.1 in
9.1 / 3.6"	218mm	8.6 in
9.7 / 3.8"	230mm	9.1 in
10.3 / 4.1"	242mm	9.5 in
10.9 / 4.3"	254mm	10.0 in
11.5 / 4.5"	266mm	10.5 in
12.1 / 4.7"	278mm	10.9 in
12.7 / 5.0"	290mm	11.4 in

**Sizes are Bottom Cup Depth measurements in cm/in.

For BEGINNERS, we recommend using the HH size WITHOUT any optional steps and pin/clip the cups to fit at the muslin stage instead of grading. Grading instructions are on the blog and FB Group.

Additional Fitting Resources available:

<https://www.lilypadesigns.com/beginners-guide>

<https://www.lilypadesigns.com/sizing-suggestion>

<https://www.lilypadesigns.com/blog/koma-pattern-bcd-alteration>

For best results, please use Adobe Reader to turn on/off Size Layers.

Print Scale

3 inch

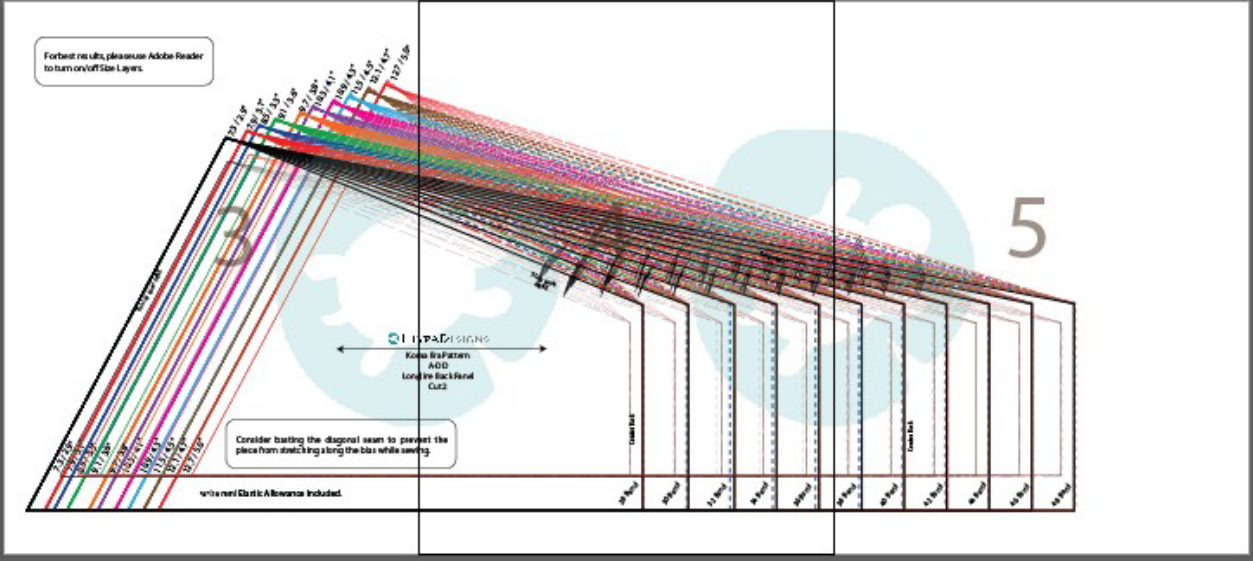
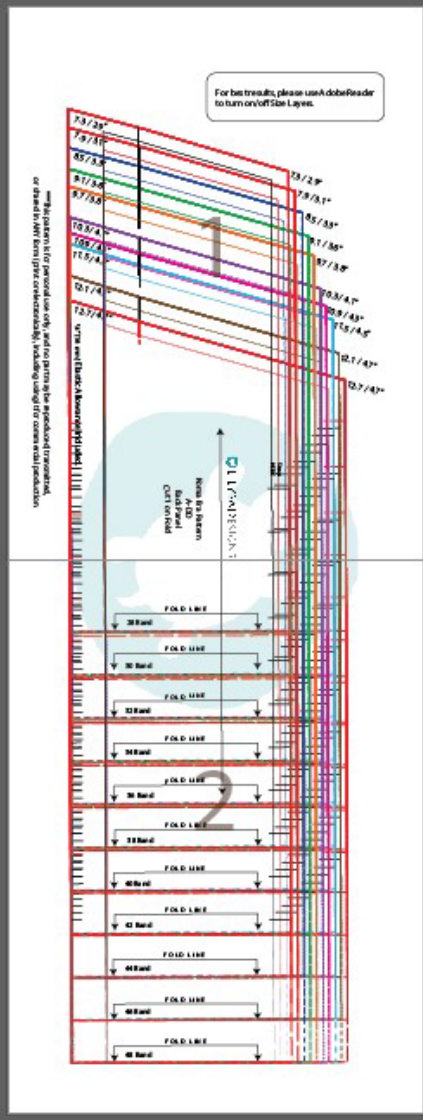
5 inch

7 inch

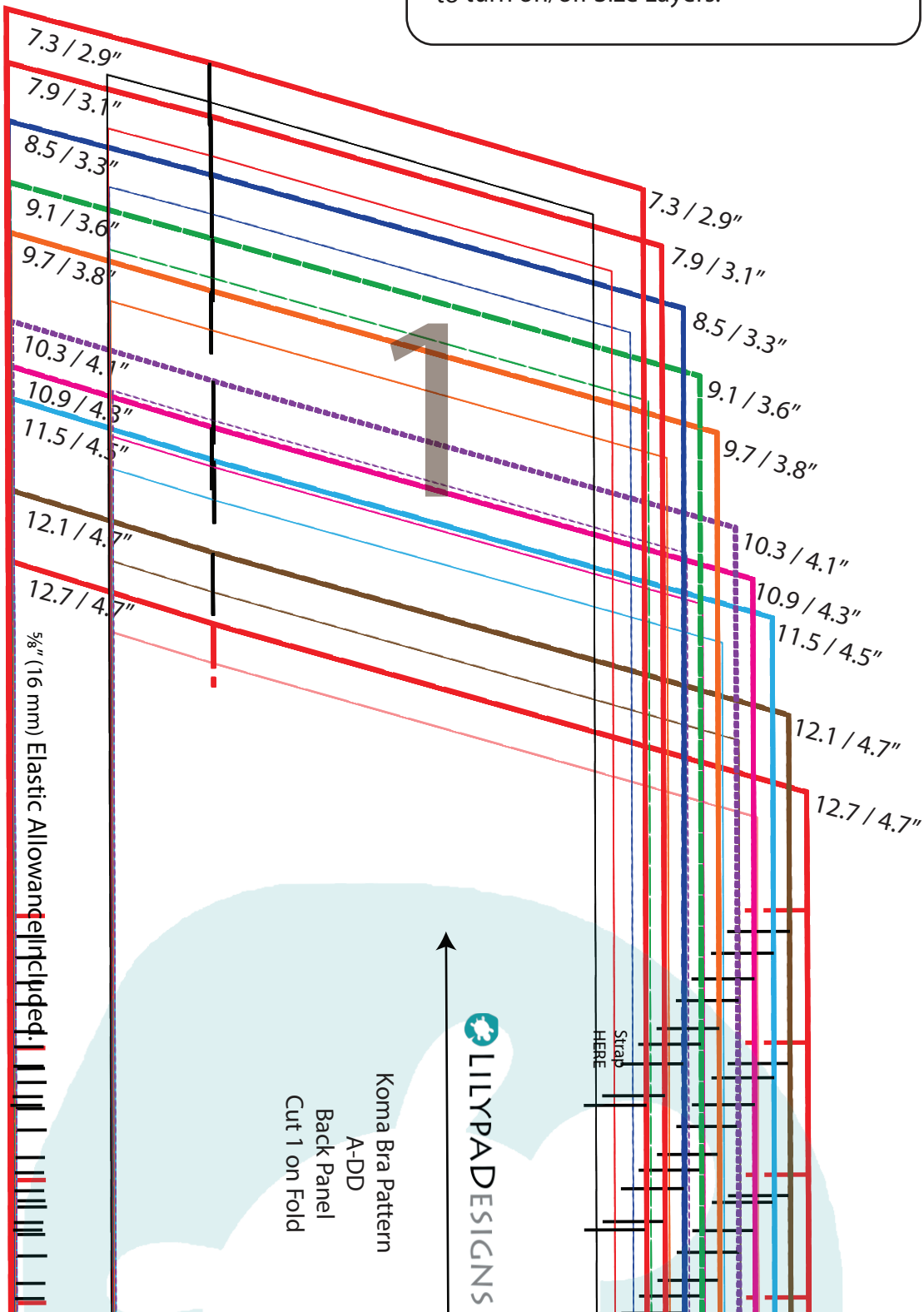
100 mm

175 mm

PATTERN ARRANGEMENT GUIDE



For best results, please use Adobe Reader to turn on/off Size Layers.



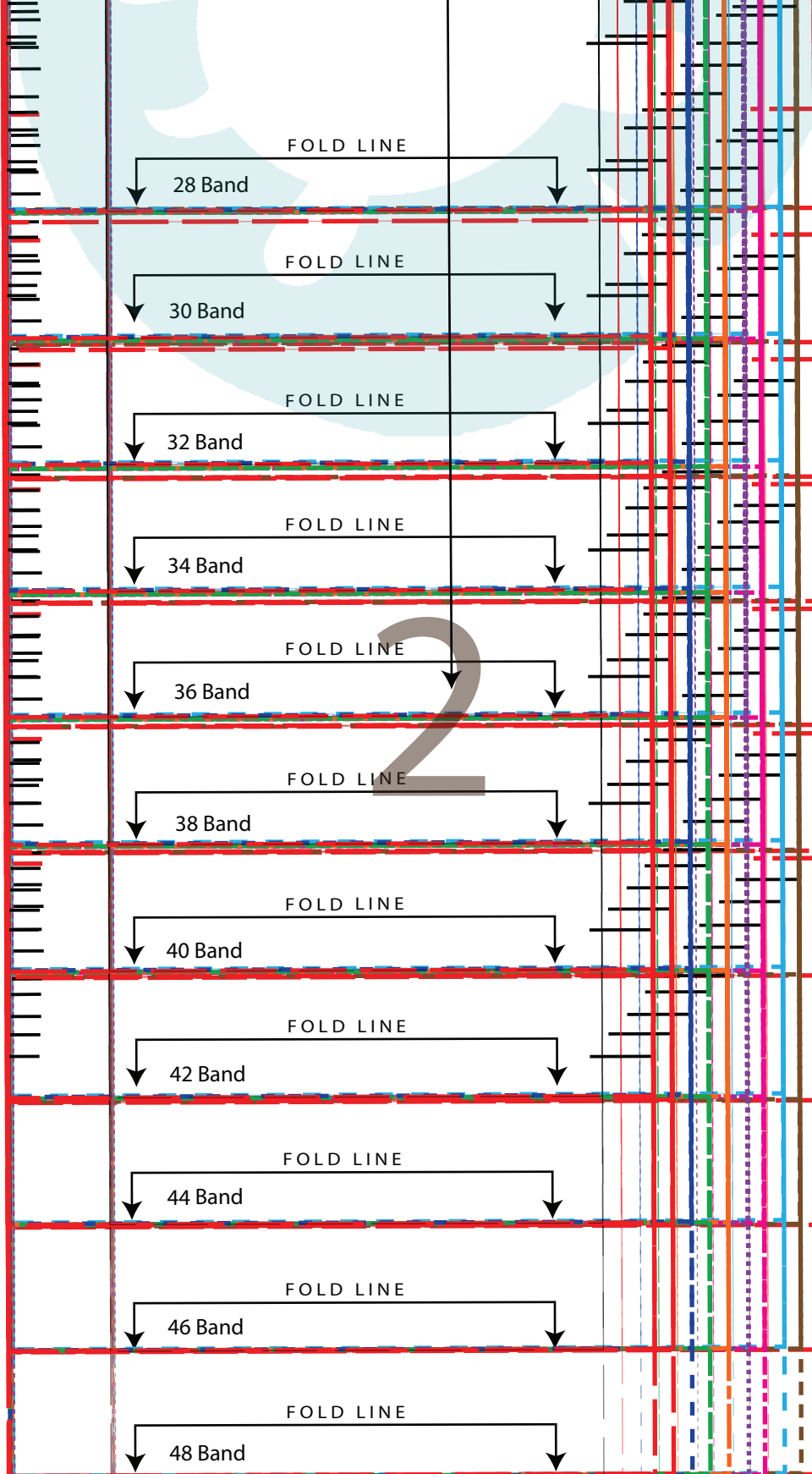
***This pattern is for personal use only, and no part may be reproduced, transmitted, or shared in ANY form (print or electronically), including using it for commercial production.

Koma Bra Pattern
A-DD
Back Panel
Cut 1 on Fold

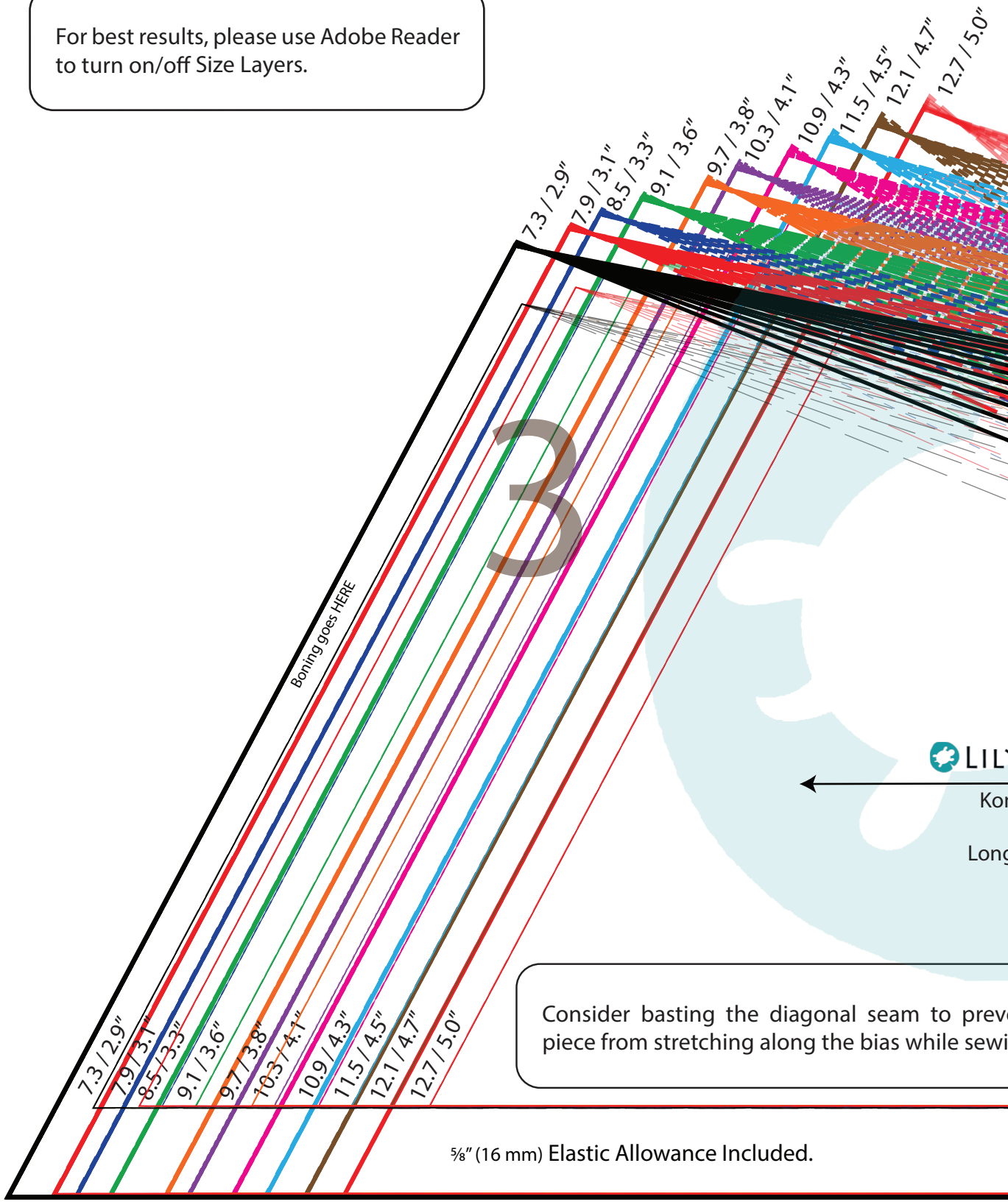
LILYPADDESIGNS

Strap
HERE

5/8" (16 mm) Elastic Allowance Included

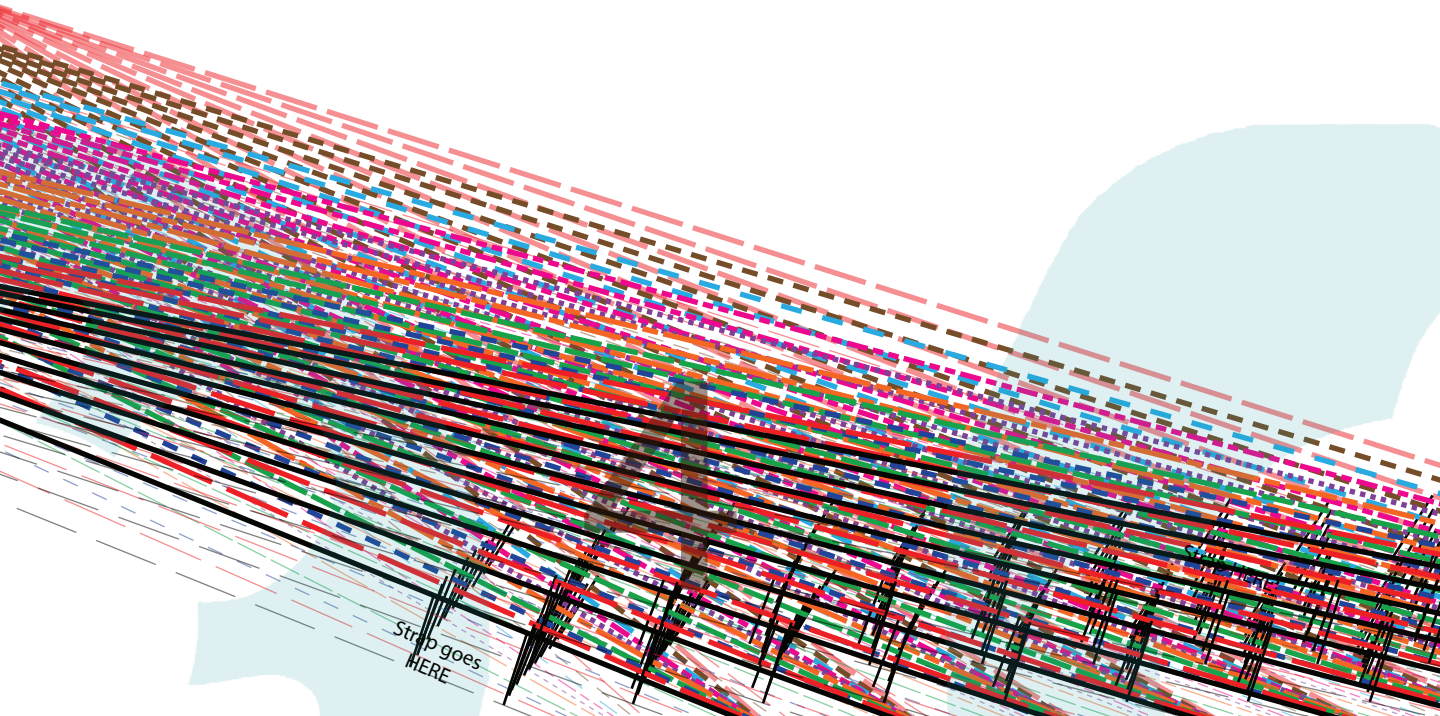


For best results, please use Adobe Reader to turn on/off Size Layers.



Consider basting the diagonal seam to prevent piece from stretching along the bias while sewing.

5/8" (16 mm) Elastic Allowance Included.



YPADESIGNS

ma Bra Pattern
A-DD
gline Back Panel
Cut 2

ent the
ng.

Strip goes
HERE

Center Back

28 Band

30 Band

32 Band

34 Band

36 Band

5

